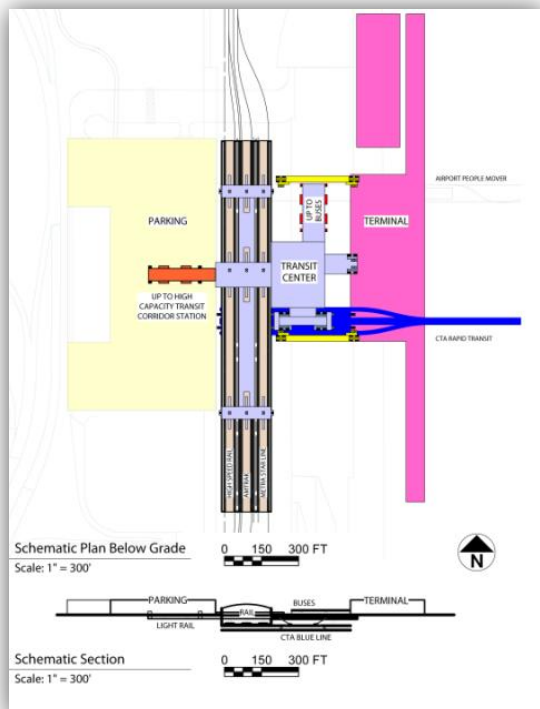
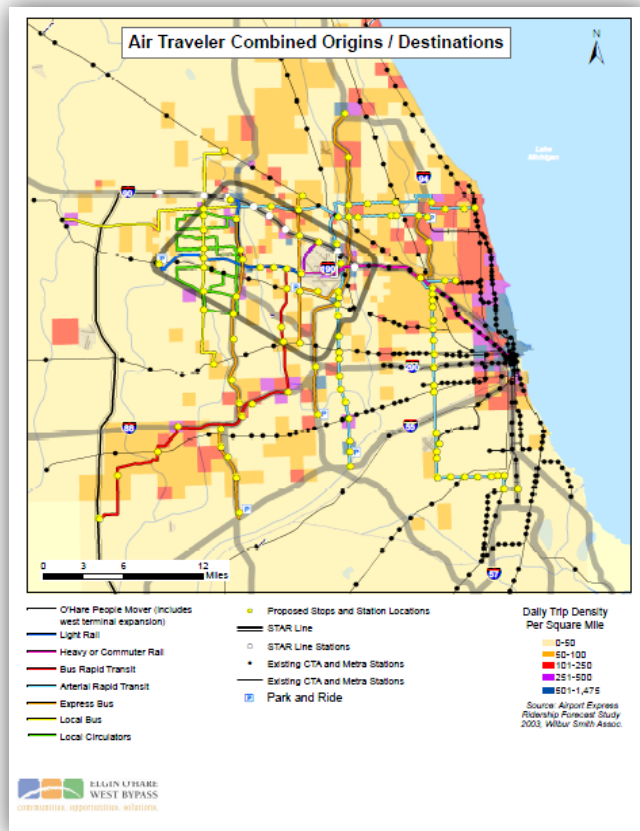


ELGIN O'HARE WEST BYPASS

The Elgin O'Hare West Bypass project is an ongoing project to evaluate transportation needs and system alternatives within a study area bordered by I-90 on the north, I-290 on the west and south, and I-294 on the east. The study area, which includes Cook and DuPage counties and 24 communities, incorporates O'Hare International Airport, a regional transportation hub and one of the nation's busiest airports, as well as multiple interstate highways, transit facilities, and major freight transportation facilities and distribution centers. The area is densely developed with a mix of residential, commercial, and industrial land uses.

Vlecides-Schroeder Associates Inc., a sub-contractor to CH2M Hill, is undertaking the transit, freight, bicycle, and pedestrian aspects of this study including: identifying and assessing current conditions; evaluating performance of those systems; identifying improvement alternatives;



evaluating alternatives, and identifying a preferred alternative that combines transit, freight, bicycle, and pedestrian improvements in the corridor.

This is one of 25 Projects of National and Regional Significance (3 total in Illinois) funded by the 2005 Safe, Accountable, Flexible, Efficient Transportation Equity Act: A Legacy for Users (SAFETEA-LU).

Improved access to O'Hare Airport is one of the key objectives of this project and has been a subject of VSA market analysis. Facilities planning is another important charge, illustrated by the graphic showing intermodal (intercity rail, rapid transit, and bus) access to a planned new west terminal at the airport.

Project Completed: Projected 2013
Client: Illinois Department of Transportation (IDOT)